

2021 Small Business Profile

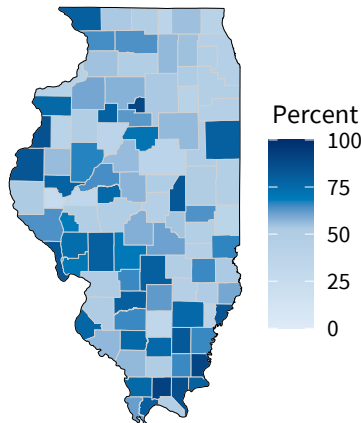
U.S. SMALL BUSINESS ADMINISTRATION
OFFICE OF ADVOCACY

REGULATION • RESEARCH • OUTREACH

Illinois

1.2 million small businesses
99.6 percent of Illinois businesses

2.5 million small business employees
44.8 percent of Illinois employees



Share of employees working at small businesses by county

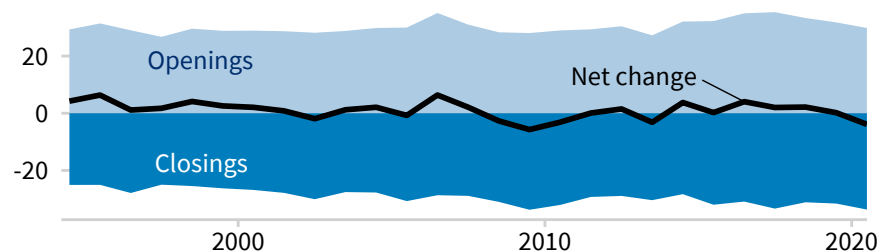
Source of data: [Statistics of US Businesses](#) (Census)

Business dynamics

Establishments

Between March 2019 and March 2020, 29,817 Illinois establishments opened and 33,702 closed, for a net decrease of 3,885. Employment expanded at 64,146 and contracted at 70,044. Small businesses accounted for 29,384 openings and 33,117 closings.

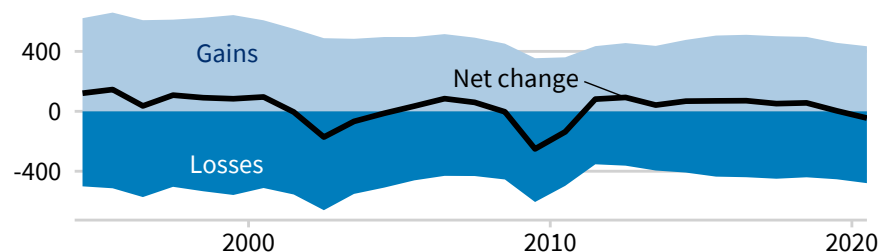
Thousands of establishments



Employment

Opening and expanding Illinois establishments added 434,435 jobs, while closing and contracting establishments lost 479,543, for a net decrease of 45,108 jobs. Small businesses gained 346,788 jobs and lost 375,638, for a net decrease of 28,850 jobs.

Thousands of jobs



Counts include temporary closures and reopenings

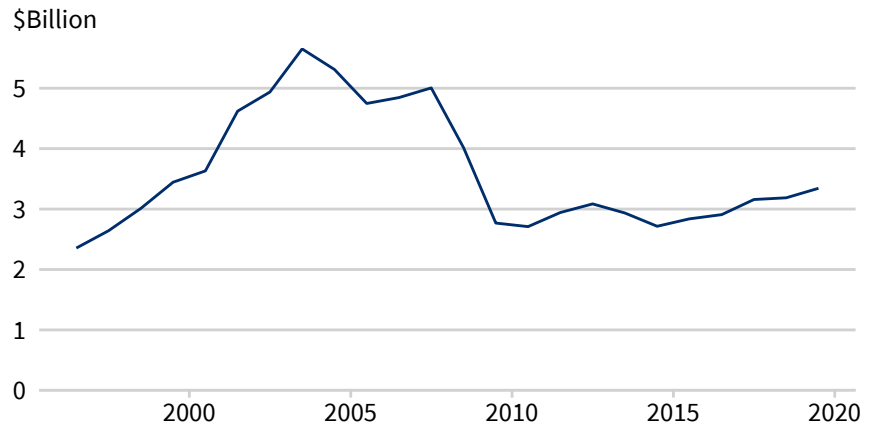
Source: [Business Employment Dynamics](#) (BLS)

Small business loans





The Community Reinvestment Act requires large banks to report new small business loans. In 2019, reporting banks issued \$3.3 billion in loans to Illinois businesses with revenues of \$1 million or less. Total reported new lending to businesses through loans of \$100,000 or less was \$3.5 billion, and total reported new lending to businesses through loans of \$1 million or less was \$11.0 billion.

Source: [CRA Aggregate Data](#) (FFIEC)

New lending to businesses with revenues under \$1 million



Small business count by size and industry

Industry	<div>     </div>			
	No employees	1–19 employees	20–499 employees	All small businesses
Professional, Scientific, and Technical Services	133,515	32,886	2,624	169,025
Transportation and Warehousing	146,248	14,014	1,123	161,385
Other Services (except Public Administration)	114,188	27,752	2,161	144,101
Construction	91,482	27,062	1,865	120,409
Health Care and Social Assistance	84,088	21,789	3,451	109,328
Real Estate and Rental and Leasing	97,487	9,774	662	107,923
Administrative, Support, and Waste Management	85,421	12,550	1,673	99,644
Retail Trade	70,292	20,189	2,323	92,804
Arts, Entertainment, and Recreation	54,764	4,040	674	59,478
Finance and Insurance	29,943	10,423	1,179	41,545
Accommodation and Food Services	15,162	17,177	4,942	37,281
Educational Services	31,618	3,056	871	35,545
Wholesale Trade	13,157	10,755	2,694	26,606
Manufacturing	10,238	7,935	3,289	21,462
Information	11,829	2,530	521	14,880
Agriculture, Forestry, Fishing and Hunting	5,362	299	13	5,674
Mining, Quarrying, and Oil and Gas Extraction	1,533	333	49	1,915
Management of Companies and Enterprises	*	146	609	755
Utilities	343	110	45	498
Industries not classified	*	276	0	276
Total	996,670	222,922	29,483	1,249,075

* Not reported by the Census Bureau

Sources: [Nonemployer Statistics](#), 2018 (Census); [Statistics of US Businesses](#), 2018 (Census)



Small business exports

A total of 23,133 identified firms exported goods worth \$54.7 billion from Illinois in 2019. Of those exporters, 20,615—or 89.1 percent—were small. Small firms exported goods worth \$13.3 billion, making up 24.2 percent of exports by identified firms.

Source: [A profile of US importing and exporting companies, 2018–2019](#) (Census)

Business ownership share by demographic group

Women



Women made up 47.6 percent of workers and owned 42.2 percent of businesses.

Veterans



Veterans made up 3.7 percent of workers and owned 4.7 percent of businesses.

Hispanics



Hispanics made up 16.7 percent of workers and owned 9.5 percent of businesses.

Racial minorities



Racial minorities made up 25.2 percent of workers and owned 20.2 percent of businesses.

Ownership shares include equal and majority ownership

Sources of data: [American Community Survey](#), 2018 (Census and IPUMS); [Annual Business Survey](#), 2018 (Census); [Nonemployer Statistics by Demographics](#), 2017 (Census)

Business count by owner demographic group

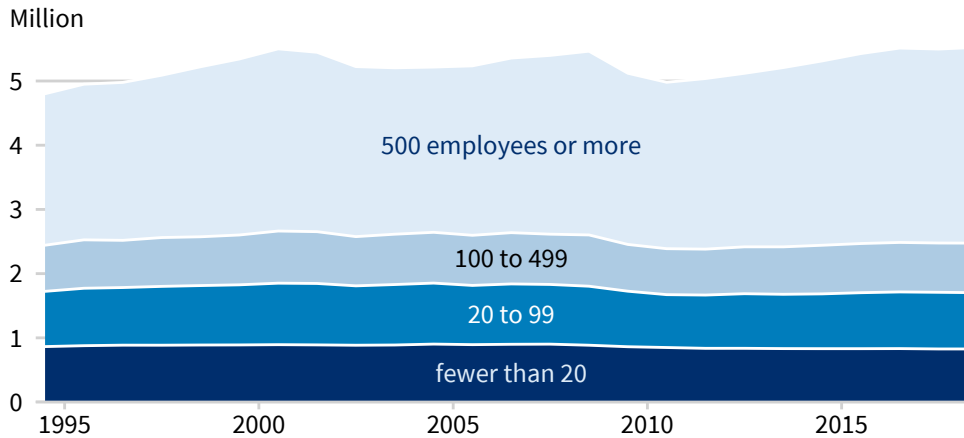
Ownership	Without employees	With employees	Total
Female	407,000	47,362	454,362
Male	532,000	155,819	687,819
Owned equally by both groups	18,500	29,923	48,423
Veteran	38,000	10,726	48,726
Not veteran	916,000	217,353	1,133,353
Owned equally by both groups	2,500	5,025	7,525
Hispanic	98,000	12,566	110,566
Not Hispanic	858,000	219,324	1,077,324
Owned equally by both groups	1,100	1,212	2,312
American Indian and Alaska Native	1,800	526	2,326
Asian	73,000	22,192	95,192
Black or African American	138,000	4,221	142,221
Native Hawaiian and Other Pacific Islander	450	67	517
White	743,000	206,265	949,265
Hispanic or racial minority	297,000	39,213	336,213
White and not Hispanic	658,000	191,527	849,527
Owned equally by both groups	2,100	2,362	4,462

Counts include only businesses classifiable by owner demographic group

Sources: [Annual Business Survey](#), 2018 (Census); [Nonemployer Statistics by Demographics](#), 2017 (Census)

Total Illinois employment by business size

Source of data: [Statistics of US Businesses](#) (Census)



Small business employment and payroll by industry

Industry	Employers		Employment		Payroll (\$1,000s)	
	Small	%	Small	%	Small	%
Professional, Scientific, and Technical Services	35,510	98.1	216,956	55.0	17,679,206	47.6
Other Services (except Public Administration)	29,913	99.3	208,390	83.9	7,338,307	76.8
Construction	28,927	99.5	176,485	83.0	12,786,206	78.7
Health Care and Social Assistance	25,240	98.4	346,746	42.8	14,659,431	37.5
Retail Trade	22,512	97.5	196,794	33.3	6,797,734	41.1
Accommodation and Food Services	22,119	98.4	338,674	62.2	6,414,308	58.0
Transportation and Warehousing	15,137	97.0	82,269	30.6	3,985,890	28.4
Administrative, Support, and Waste Management	14,223	96.3	145,016	27.8	6,439,243	34.0
Wholesale Trade	13,449	94.0	165,969	50.9	11,252,861	43.3
Finance and Insurance	11,602	95.7	100,131	29.3	9,535,272	26.7
Manufacturing	11,224	93.9	253,391	47.0	14,063,127	42.1
Real Estate and Rental and Leasing	10,436	98.0	53,042	65.1	3,222,533	64.5
Arts, Entertainment, and Recreation	4,714	98.3	56,182	63.0	2,021,565	64.8
Educational Services	3,927	97.2	67,959	40.2	2,310,826	31.7
Information	3,051	91.2	40,592	31.3	3,010,005	25.9
Management of Companies and Enterprises	755	53.4	18,697	8.6	1,664,717	6.8
Mining, Quarrying, and Oil and Gas Extraction	382	92.9	4,085	57.7	309,122	55.6
Agriculture, Forestry, Fishing and Hunting	312	97.5	1,196	59.7	50,339	53.0
Industries not classified	276	100.0	345	100.0	8,557	100.0
Utilities	155	82.9	2,253	7.7	185,170	5.6
Total	252,405	98.1	2,475,172	44.8	123,734,419	39.5

Source: [Statistics of US Businesses](#), 2018 (Census)

About this profile

Small businesses are defined here as firms with fewer than 500 employees. Figures and statistics may incorporate approximations because of missing or otherwise problematic data. Data analyzed here predate the COVID-19 pandemic, the impacts of which have differed by industry, geography, and demographic group. More information about [the impacts of the pandemic](#), electronic versions of these and other [geographic profiles](#), and additional resources are available at <http://advocacy.sba.gov>.